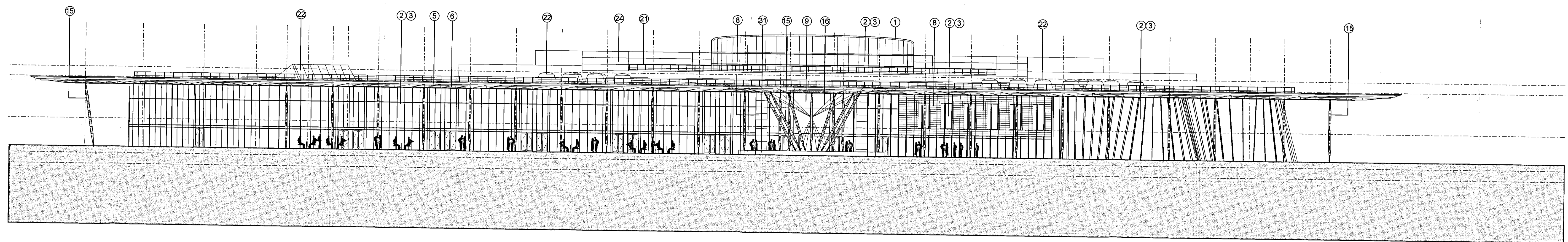


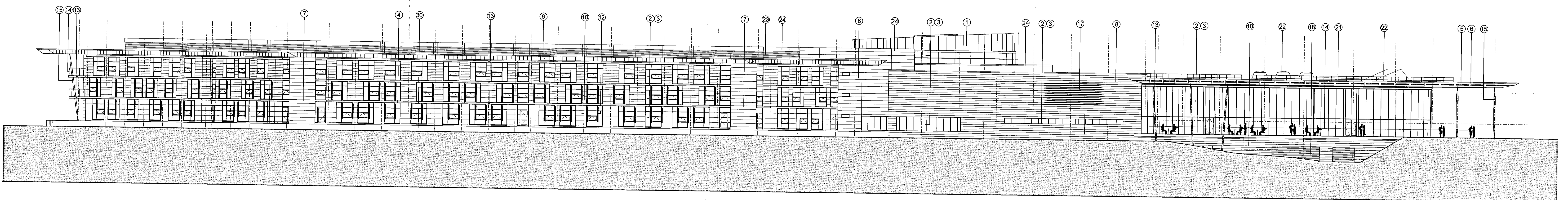
NOTES  
 1. To be read with CDM Risk Register  
 2. Do not scale, check this is the latest version, if in doubt, ask the drawing issuer to be clear.

**MATERIALS LEGEND**

- ① Pre-painted copper cladding
- ② PPC curtain walling
- ③ Sealed double glazed units
- ④ Sealed double glazed insulated spandrel panels
- ⑤ Bronze anodised aluminium louvre blades
- ⑥ Pre-weathered brass cassette panels to soffits and fascias
- ⑦ Pre-weathered brass strip cladding
- ⑧ Pre-weathered brass plank cladding
- ⑨ Structural glazing (insure glazed)
- ⑩ Stone cladding
- ⑪ Oak strip boarding cladding
- ⑫ Oak solar shading fins
- ⑬ Jet channel
- ⑭ Oak solar shading fins
- ⑮ Laminated glass balustrade
- ⑯ Column column with engineered steel head and base connection details
- ⑰ Stainless steel bracing to porte cochere
- ⑱ Bronze screws to plant louvers
- ⑲ Roller shutter doors
- ⑳ PPC steel doorset
- ㉑ Standing seam metal deck roofing
- ㉒ Horizontal PPC 12 x50 fins
- ㉓ Pre-painted copper rooflight surround
- ㉔ PPC louvers
- ㉕ PPC transoms cassette cladding
- ㉖ Painted cladding panels in PPC support framework
- ㉗ Painted steel columns with engineered head and base details
- ㉘ Clear double glazed units
- ㉙ Timber louvers
- ㉚ Tensile opaque fabric roof covering
- ㉛ Cotton walling
- ㉜ Dressed stone walling



09003-350/01  
 HOTEL BUILDING: NORTH ELEVATION  
 SCALE 1:200



09003-350/02  
 HOTEL BUILDING: EAST ELEVATION  
 SCALE 1:200

P/10/00255

RECEIVED  
 24 FEB 2013  
 TIME: .....

B ISSUED FOR PLANNING	2009/02/24	MC	SR
A Draft Issue For Comments	2009/01/29	MC	SR
1 First Issue	2009/02/22	DR	RF
Rev	Date	By	Reason

redboxarchitecture  
 Red Box Architecture, 24 Nelson Street, Newcastle upon Tyne, NE1 1RU  
 T: +44 (0)191 262 7162, F: +44 (0)191 262 7111, red@redboxarchitecture.com, www.redboxarchitecture.com  
 Red Box Group is a trading name of Red Box Architecture

THE NATIONAL FOOTBALL CENTRE  
 ST GEORGE'S PARK

HOTEL BUILDING  
 North & East Elevation

1:200	09 003	350	B
AD	PLANNING		

copyright © Red Box Design Group Ltd 2013